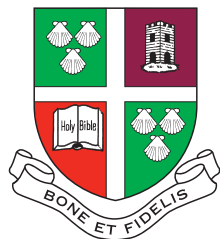


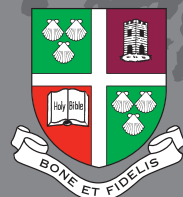
# the **ROUGH**

GUIDE TO SIXTH FORM AT WOODHOUSE GROVE



**ACCESS ALL AREAS**

# Sixth Form at The Grove



**“ We want to work with you to create a bespoke and individualised journey that gets you to your dream post-18 destination. ”**



We make a few promises to you when you start Sixth Form at the Grove. We promise to take the time to get to know you as a person and will help you in every way that we can. Tell us what you want to study and we will try to build subject blocks around you – not expect you to fit in and conform as other as other schools or colleges might. When the time comes, we will give you helpful advice on UCAS, Universities, Apprenticeships and Careers. All should help you on your journey to ‘reaching your potential’.

And because we know you and because our staff have years of experience, this advice will actually mean something. To give direct focus on the future of our Sixth Formers, tutor groups are determined by their future career aspirations, each led by a Form Tutor that has specialist knowledge in that career field. Forms are a mix of Y12 and Y13 pupils, to increase diversity and experience within the tutor group.

We promise to look after you, knowing that this does not mean treating you like a child but rather offering a guiding hand as you navigate life in the Sixth Form. We will support you, not only in your academic studies but also in your other interests, helping you fit both into your life. We will talk to your parents, if you need us to and work together with all of you to help you achieve the things you want. And we will

provide you with the space and facilities you need to study or hang out or play sport or act or do any of the things you want to do.

Finally, whether you are coming to us from Y11 at The Grove or elsewhere, we promise that this can be a fresh start if you want it to be. This is the perfect time for re-invention, if you wish it. We will see you, treat you and respect you as the person you are now - not the child you were then.

So, those are our promises. And we actually enjoy keeping them. It is a real pleasure to get to know each of our Sixth Form students and watch them grow in independence over the 2 years that they are with us. And remember, entry requirements into Sixth Form at The Grove are not set in stone. We are flexible and pleased to offer students opportunities that they may not find elsewhere because we know, from experience, that potential sometimes takes time to surface. We love to unearth talent that has previously been hidden.

But enough from us.

Read on and find out more from the people who really matter...

## Our students.

# what's INSIDE

## HEADS UP

The Senior Prefect Team give you the lowdown on what the 6th Form is really like.

**4-5**

## TOP 10 REASONS TO JOIN US

Why 6th Form at The Grove?

The top 10 reasons given by our students.

**6-7**

## WHAT CAN I STUDY?

A list of subject options and the info you want on the combination flexibility we're famous for.

**8**

## WHAT SHOULD I STUDY?

"Helpful" advice coming out of your ears? Here's an easy to use guide for picking the subjects that are right for you.

**9**

## PATHWAYS PROGRAMME

An overview of what our Sixth Form Pathways Programme is like.

**10**

## MEET ISABEL

Get to know Marketing Prefect Isabel and her experience of Woodhouse Grove's Partner Programme

**10**

## LIVING THE DREAM

A day in the life of a Grove 6th Former.

**11**

## GAME ON

So, you're into sport? Funny that – so are we. Find out just how much.

**12**

## WORK OF ART

No one likes a show off. Apart from us. Why else would our Performing Arts facilities be second to none?

**13**

## OUT OF THE CLASSROOM

Thinking outside the box is vital for health, happiness and success. Here are the exciting, fun and future-focused options on offer at The Grove.

**14**

## MEET LIAM

Liam tells us what he thinks of Sixth Form life.

**15**

# Heads UP!

Head Prefects Tish and Pippa give you the low down on what Sixth Form is really like.

## **When did you join the Grove?**

T: I joined Woodhouse Grove in Year 7.

P: I've been at The Grove since Pre-Nursery, so a long time!

## **What are you studying at A Level?**

T: Business, Psychology, and BTEC Sport

P: Biology, English Language, BTEC Sport



## What are your Sixth Form Top Tips?

T: Build relationships with your teachers, they're there to help and support you and they do actually want to help you. Make sure you work hard all the way through, not just in Year 13. Start working hard in Year 12 and it makes everything much easier later on! And make the most of every opportunity you're given.

P: I would say that getting involved in as much as possible is the most important thing. Sixth Form is the last years you'll spend at school so don't limit yourself to your friend group, talk to everyone and make friends. The sixth form buildings are made for socialising so it's a waste not to use them. Also, go to teachers for support, Miss Blake and Miss Brennan are amazing and want to help you.

## What would you like to do when you leave?

T: I would like to go to university and then become a Sport Agent.

P: I'm still deciding but I think I will either do Biomedicine or Food and Nutritional Science at Uni.



## What are you most looking forward to in your role as Head Prefect?

T: I'm excited to develop as a person through the role and also give something back to the school as they've supported me and helped me become who I am today.

P: I'm excited to be more involved with school and help the younger students who might want advice or support. It's nice that they can see me as someone they can go to for help if they need it.



## What are the main differences between Sixth Form and Lower School?

T: There's so much more freedom, I love that I could choose exactly what I wanted to study and now I can focus on what I really enjoy and what will set me on the right path for my future. It has really helped having teachers that want to support you and prepare you for the bigger workload and for what life is like in the real world.

P: There's so much more independence, it's such a change from lower school that I have the freedom to choose what I want to study and then in my free periods or free time I can choose what to prioritise. Teachers treat you more as an adult, which means more responsibility but also more respect, which is nice.

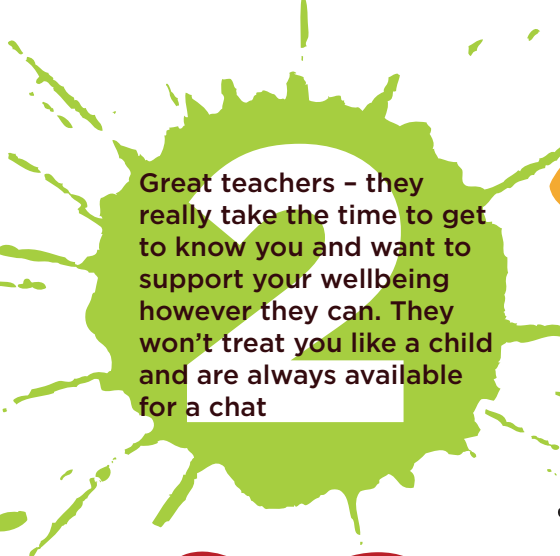
## Describe Sixth Form in 3 words...

Tish

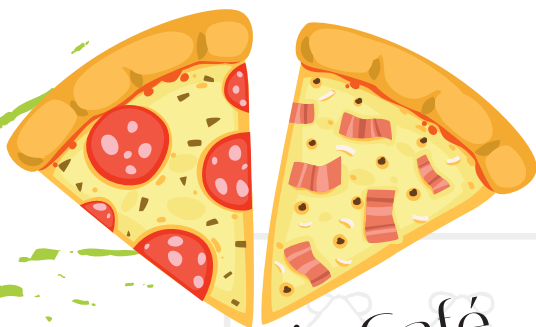
Memorable, Special, Amazing.

Pippa

Fun, Challenging, Meaningful.



Great teachers – they really take the time to get to know you and want to support your wellbeing however they can. They won't treat you like a child and are always available for a chat



Woody's Café

The pizza at break time is the best thing ever.



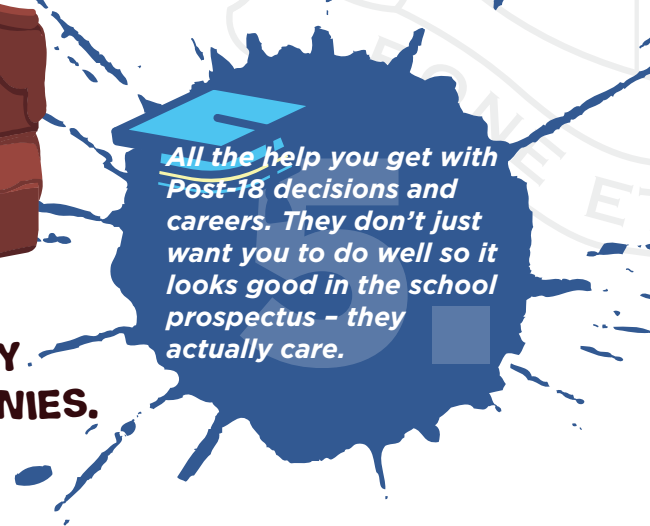
The sense of community. Y12 and Y13 all hang out together and the Sixth Form Facilities feel like a really special, friendly place, that is ours.

TOP

REASONS TO JOIN US IN



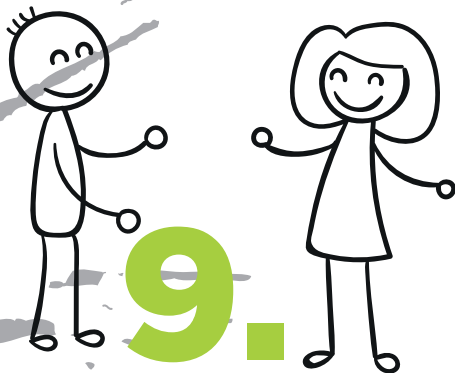
**THE LEGENDARY  
CHOCOLATE BROWNIES.  
OMG.**



*All the help you get with Post-18 decisions and careers. They don't just want you to do well so it looks good in the school prospectus – they actually care.*

# 10.

*There is loads to do when you are not studying - like sport, drama and music - and some brilliant trips you can go on. So you're never just hanging around. Unless you fancy a rest in the Sixth Form Facilities of course!*



THE PEOPLE! I'VE MADE SOME GREAT FRIENDS HERE WHO I WILL STAY IN TOUCH WITH FOREVER.

# 10

THE SIXTH FORM!



The lemon chicken & broccoli stir fry.

**Small class sizes make it much easier to learn and contribute to discussions during lessons.**



*Even if you want to do an unusual combination of subjects, they will try their best to make it happen.*

# What can I study?

- Art & Design
- Biology
- Business
- Chemistry
- Computer Science
- Design & Technology
- Drama & Theatre Studies
- Economics
- English Language
- English Literature
- Enterprise and Entrepreneurship (BTEC)
- French
- Geography
- German
- Government & Politics
- History
- Mathematics
- Further Mathematics
- Music
- Music Technology
- Physics
- Psychology
- Philosophy
- Spanish
- Sport (BTEC)
- Extended Project Qualification
- Sports Leaders

## Post 18 Event

We have previously introduced the annual Post-18 Event where we will welcome approximately 30 institutions and companies to take stand in our new Sixth Form Building and Morton Hall to chat to our Year 12 students about their options after school. The evening featured discussions on various pathways available to our students, emphasising our support in reaching their desired goals.

## Where will I study?



We are delighted to be fully utilising our new state-of-the-art Sixth Form Building. The building combines a professional feel, with mixed-use space for both collaborative and individual working, as well as high tech seminar rooms.

Years 12 and 13 are enjoying the range of spaces, including the outdoor pods and the building has already been used for a myriad of activities including student lessons, industry specific workshops with partner businesses, our life skills programme, post 18 guidance events, and medical practice interviews.

Mr Softley, Assistant Head (Sixth Form and Futures) said

“We are extremely lucky to have a forward-thinking space where students can be industrious and purposeful in their pursuit of not only reaching their potential, but where they will be prepared, to make the transition into the real world smoother and where our students can be ahead of their peers.”

## Here are some pretty impressive figures:

**90%**

Around 90% of students secure a place at their first choice university

**98%**

98% average A-level pass rate

## Average UCAS points score of 133 (AAB equivalent)

However, Sixth Form at The Grove is about more than this. It is a place where you can find out what really makes you tick and make your own stamp. We simply take that very special brand that is uniquely you and help you sell it to the world.

# What should I study?

## Decisions, Decisions!

Decisions, Decisions! The biggest difference between Y11 and Sixth Form is that you will spend a lot more time per subject - so it is important that you pick the right ones! Deputy Head, Mr. Wright tells you how...



## Our guide to subject selection

---

### Do you know what you want to do after Sixth Form?

#### YES



Wow! We're impressed. Come and talk to us about what you need to do next. Years of experience have given us insider knowledge about how to reach your goals. We can help you find the best route into the career you want, whether this is further study at University, an Apprenticeship, or something else entirely!

#### MAYBE



Great - this is a good place to be. Come for a chat and we'll discuss the options best suited to your ideas - but also put some contingencies in place, in case you change your mind. Our Sixth Form Centre is staffed from 7.30am until 6pm - so there is always someone on hand to chat to about your work and Post-18 decisions.

#### NO



'Making a decision about your future is very different to what it was when your parents were at school, there are now many different pathways towards your chosen career that might not have existed when your parents were younger. You will find that this process is new to both you and your parents! If you think they would like to discuss it with us then ask them to give us a call!'

University selection is very different to what it was when your parents were at school, with less rigid subject requirements, pre-interview testing and the need to choose 5 universities. You will find that it is not only you that the whole process is new to, but also your parents. If you think they would like to discuss it with us then just ask them to give us a call. We love chatting to parents!

# PATHWAYS PROGRAMME

Sixth Form at The Grove is forward thinking – and pretty unique. The Pathway system tailors things to suit you – right down to your Tutor Group, which is based on your subject choices and career goals, with a Form Tutor who has specialist knowledge in the field you’re interested in.

Depending on what you want to do when you leave school, you can make use of the school’s Partner Programme. This organises relevant work experience with a Grove Business Partner – one of a wide range of local businesses. They understand the skills you need to succeed – and help you develop them.

There is also a Life Skills programme run at school which covers all sorts of useful stuff, from first aid to financial planning. Let’s just say – there are opportunities at The Sixth Form at The Grove that you may not find at other schools and colleges. Opportunities that will give you a head start for life in the outside world.



## Meet Isabel Marketing Prefect

I have been at The Grove since Year 7 and I’m currently studying A-Level Media Studies, BTEC Enterprise and Entrepreneurship and A-Level English Language, and completed a work placement with Ponderosa, a marketing agency, in the summer term.

I worked closely with the Sixth Form team to organise my marketing work placement, pursue new experience opportunities, write applications and manage my workload. When moving up to Sixth Form, ‘workplace’ networking and relationships became a more important focus in our school life.

At my marketing placement, I threw myself into hands-on projects, working closely with brands to plan and carry out marketing campaigns. This allowed me to put my subject knowledge to practice by analysing competitor activity, trend forecasting and producing creative ideas. I also learnt how to organise collaborations, clearly display data and pitch ideas to brands. My work placement allowed me to gain hands-on experience and confirm my interest and passion for marketing, whilst also providing insight into other business sectors (such as data analysis). Thanks to Ponderosa, I got the confirmation I needed to pursue this career path, and I am now working towards a degree apprenticeship in digital marketing and data analysis.



# Living the Dream

A day in the life of a Grove Sixth Former. The official term is “Freedom within a Framework” which basically means: enjoy your lessons, then feel free to make the day your own. After all, you’re here because you want to be.

- 7.00am - 7.30am** Attend a morning session in the fitness suite or swimming pool.
- 8.00am** When I decide to skip my morning swim session, I drive into school and either nip to the dining room for breakfast or get a coffee at Woody’s.
- 8.30am** Attend morning registration for a catch up with my tutor and form group, setting me up for the day...
- 8.40am** First lesson - Economics.
- 9.35am** Private study period, that I spend in the Sixth Form Centre’s work space.
- 10.30am** Futures Friday! Time to pencil in some dedicated time for development and support from the Sixth Form team.
- 10.55am** Break...catch up with Mr Softley.
- 11.15am** Second lesson – Government and Politics.
- 12.10pm** Spend some time at The Hub, chatting to Year 7s about school and homework. It seems like ages since I was their age...
- 1.05pm** Lunch. Meet up with everyone for my favourite – beef madras. Sneak in a jam doughnut – it would be rude not to!
- 2.10pm** Psychology lesson. Totally reinforces my decision to read this at Uni.
- 3.05pm** Head over to the new Sixth Form Building for a study session.
- 4.10pm** Netball practice, we have an away match this Saturday.
- 5.45pm** Decide to stay at The Grove for tea as the parents are both working late. Good move – it’s Taco night!

## Beat the Clock

Boarding at The Grove is totally flexible and gives Sixth Formers a taste of what it’s like to live in University Halls. Think about it – it could be the ideal option for you.

# GAME ON

We're not going to lie, sport is pretty massive at The Grove and whether you're a player or a supporter, there's plenty of good natured sports banter to be had in Woody's most days. The full fixture list for team sports means there are regular practices in the week and matches most weekends. If team sport is not your thing, then you can use the gym, pool or climbing wall to get your fitness fix. The daily lunchtime football kickabout is hugely popular with our Sixth Formers and many leavers class it as a highlight in their yearbooks.



**"Our ambition is to achieve national and international recognition as the school of choice for parents, seeking an outstanding all-round, and full education for their children. Our Sixth Form sports offering aims to unlock every pupil's potential so that they become the very best of themselves. We promote sporting excellence and develop fitness, well-being and healthy competition across the whole school. We seek to offer a broad range of opportunities for all abilities and aspirations. This includes social and recreational activities, as well as high performance sports to support and guide those with high level ambitions. We have a proud record of high achievement and national profile in a number of key sports and are determined to build on this legacy. This has resulted in us introducing a stretch and challenge development group across all age groups, with the main goal of helping develop our pupils' social, mental and physical attributes to enhance levels of performance within their chosen sport or activity. Supportive and enthusiastic staff have proven expertise; the facilities are enviable and combine with an inclusive culture to produce a unique experience with tour memories and friendships that will last a lifetime."**

Director of Sport



# WORK OF ART

From brass band to rock band, from cabaret to Shakespeare, we have everything covered for Sixth Form students interested in music and drama.

There is a full programme of break time concerts and recitals, so if performing is your thing, there are plenty of opportunities at The Grove.

Whether you are studying Music or Drama at A Level or are simply passionate about your art, our dedicated Performing Arts team will help you find the perfect channel for your creativity. The stage is yours.

Taking part in music as a Sixth Form student puts you in a position of responsibility and leadership; whether that's overtly guiding and encouraging younger pupils in their performing arts journey or more subtly by modelling performance and rehearsal etiquette. We expect you to want to be a role model and to be actively involved in events of all kinds. A full and varied programme looks good on your CV but it also builds a whole range of practical, social and soft skills which will stand you in good stead later in life. So why not get involved in some of our excellent music and performing arts activities?



# OUT OF THE Classroom



The Grove Sixth Form is about a lot more than just studying. We hope that you will be able to grab a few of the many other opportunities on offer. After all, getting out of the classroom is vital not just for a healthy UCAS form, apprenticeship or work applications - but also a healthy, happy you! Universities and organisations read the same old UCAS statements and applications over and over again. At The Grove, there are opportunities to suit all interests that will make you stand out from the crowd.

The Duke of Edinburgh Award is a proud stamp for any CV. whilst future business tycoons have the opportunity to test their entrepreneurial flair in the Leeds Enterprise Advisory Programme, setting up a business from scratch and marketing their product. Grove Sixth Formers also participate in the community service programme, where you meet new people and connect with the local community that surrounds The Grove.

Leadership roles within the Sixth Form cover a range of areas from Equality and Diversity to marketing and anti-bullying. Why not apply to be a Prefect or become a mentor to younger pupils at The Hub? The Grove is the perfect place to test out your leadership skills. Who knows where they could take you? We are constantly thinking of ways to make



our students' A Level experience as exciting and interesting as possible - from theatre trips to meetings with industry experts. We try to bring your studies to life - but are also aware that there is life after studies.

Our students always include the opportunity to travel on trips and tours as a very special aspect of Sixth Form life at The Grove.

**Make your first stop The Grove and you might find yourself there quicker than you think.**

# Meet Liam

**How long have you been at Woodhouse Grove?**

I started at Ashdown Lodge in the pre-nursery and then went to Brontë House before I came to Woodhouse Grove and the Sixth Form.

**What has your Sixth Form experience been like so far?**

Sixth Form has been the highlight of my school journey. I'm able to focus on what I really enjoy and while the workload is higher I feel like I'm much more enthusiastic about my studies now and I want to work hard. I can focus on the subjects which are important to me now.

**What are you studying?**

Maths, Further Maths, Computer Science, and Music.

**What are your plans for after Sixth Form?**

I would like to go to university somewhere in the North to study Maths, probably at the University of York!



globalbridge

## The Grove joins Globalbridge

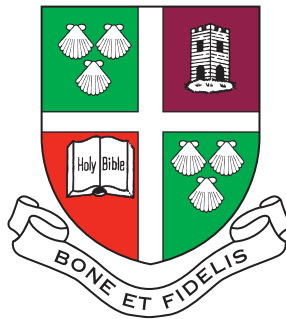
Woodhouse Grove is one of the first schools in England to offer each of our pupils a unique, digital Globalbridge profile.

Students can not only upload their academic achievements to the Globalbridge platform, but also a biography, aspirations, photos, sound bites, electronic documents and even video footage showing sporting highlights, drama productions and musical performances. They can then share their Globalbridge profile with any university or employer, showcasing all their talents, skills and qualifications - helping them stand out in a competitive field.

Better still...Groviens have access to the Globalbridge platform for life - and so can use it as an ongoing record of experiences and achievements, evidencing the development of skills for future life and work.

# INTERESTED IN APPLYING FOR WOODHOUSE GROVE SIXTH FORM?

Please fill in an application form online at  
**[www.woodhousegrove.co.uk/admissions](http://www.woodhousegrove.co.uk/admissions)**  
or email **[admissions@woodhousegrove.co.uk](mailto:admissions@woodhousegrove.co.uk)**



Woodhouse Grove,  
Apperley Bridge, West Yorkshire  
BD10 0NR  
**Tel: 0113 250 2477**