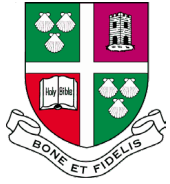


WOODHOUSE GROVE SCHOOL

*Making each student the best version
of themselves they can be.*

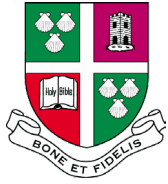


Introduction



James Lockwood (MA)
Headmaster
Old Grovian





Our History & Heritage

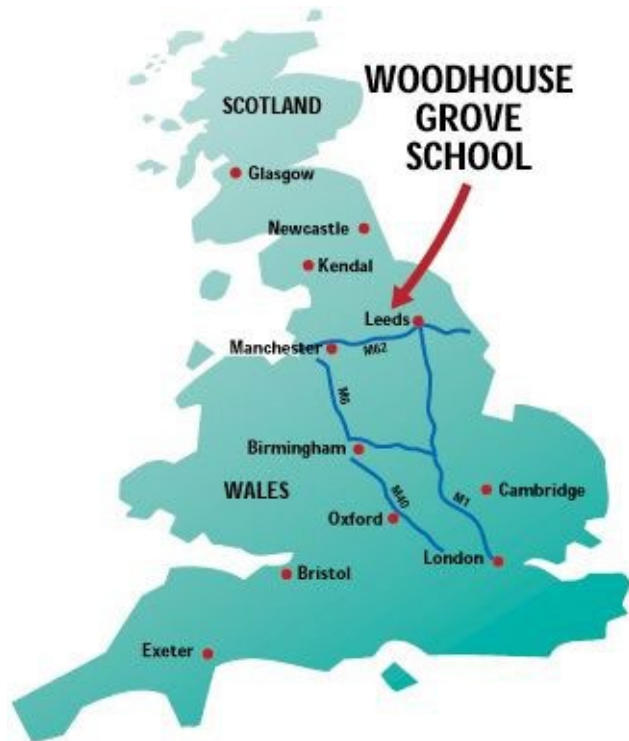
- Founded in 1812 for the sons of Methodist Ministers opened with 9 boys
- Founded by John Wesley
- 1812 Patrick Brontë met his wife Maria at the school – parents to the famous English writers Charlotte, Emily and Anne.
- 1934 Junior School opened – called Brontë House
- 1985 Girls admissions

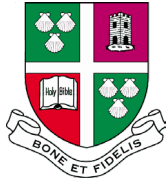




Where are we?

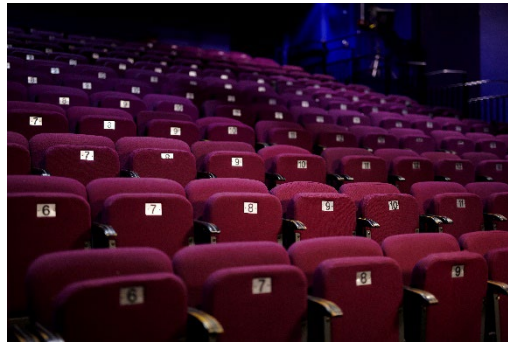
70 acres of Yorkshire countryside
2hr from London on Train
1hr from Manchester Airport
Have our own train station

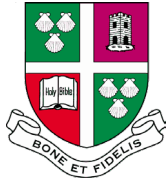




What are we?

- Day & Boarding School for Girls & Boys aged 11-18 years
- 750 pupils at the Grove
- 10% Boarders
- One boys & One girls Boarding House
- Outstanding facilities





Our Boarding Alumni

General the Lord Houghton of Richmond – 1966-73

Chief of The United Kingdom Defence Staff 2013-2016

Flight Lieutenant Tom Bould – 1988-2000

Leader of the Red Arrows

Andrew Smith – 1982-95

Senior Vice President & Head of Public Affairs, Weber Shandwick.

Lord Mayor of London 21-22

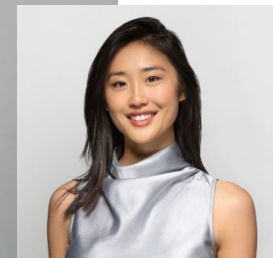
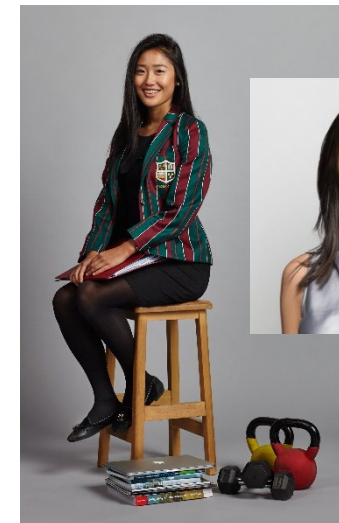
Dr Helen Mollard – 1989-96

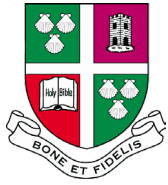
Consultant & Lead of Emergency Medicine in Yorkshire

Cecilia Zhao – 2009-17

A*A*A*A*A* 1st Class Hns St. Catherine's College, Oxford

Guest speaker @ The New York Times, CGTN, Forbes, The Times, People's Daily, and Phoenix TV. Forbes Top 100 Global Outstanding Chinese (2022), Pan Asian Women's Association (Education NGO) Women of the Year (2020), Huxiu.com Women of the Year (2019)





Boarding life

Care & Settling In

- Induction, Buddy System, Tutor Groups

Family & Community Feel

- Always features on our parent and pupil feedback.

Academic and Pastoral Support

- Prep support, 1-1 tutor support, mental wellbeing, medical centre and school nurses

Food and Cuisine

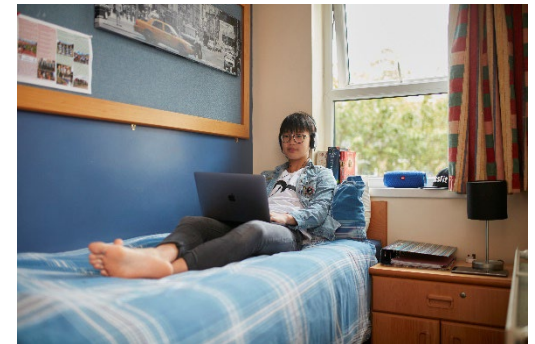
- International cuisine nights, students help design the boarding menus

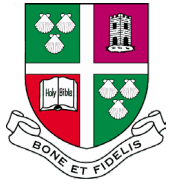
Co-curricular Opportunities

- A full varied after school, evening and weekend programme including trips and excursions.

Life Skills

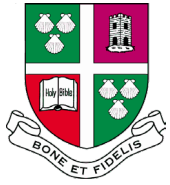
- Preparing our students for life beyond the Grove .





Boarding life





Stretch & Challenge Students

- Modern approach boarding school set on traditional values
- UCAS – guidance through the full process – UK, USA, Europe, Asia and Middle East
- Oxbridge – Coordinator is Oxbridge, 1-1 mentoring through application, visits and lectures
- Business Partnerships and Careers advice
- Pathway Programmes – Commercial (Business), Physics, Maths & Engineering, Biomedical Sciences

Ensuring that all pupils at The Grove have the opportunity to fulfil their academic potential.

Academic extras

Talks from Oxbridge alumni

UKMT Maths challenge

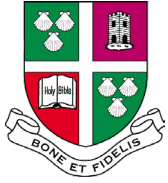
Royal Institute of Mathematics Masterclasses

Cambridge Chemistry Challenge

Royal Society of Biology & Chemistry Olympiad

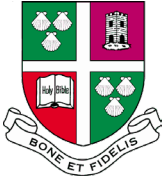
A-Level Literature Lectures





The New Sixth Form Building

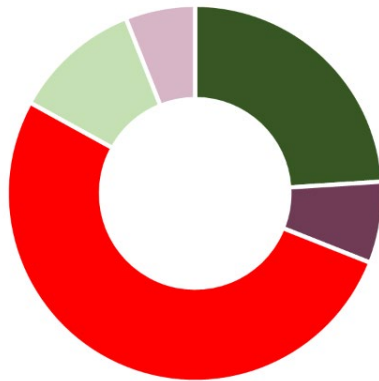




Academic Results

Key result facts A-level average over 3 years...

- Physics - 80% A*-B
- Biology - 80% A*-B
- Chemistry - 80% A*-B
- Further Maths - 75% A*-B
- Maths - 70% A*-B



■ Russell Group 24% ■ Overseas University 7%
■ Other UK Universities 52% ■ Apprenticeship/Work 11%
■ Gap Year 6%

A-Levels

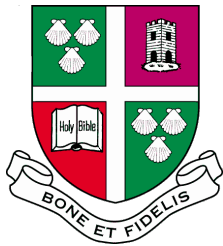
50% achieved ABB or better results.

The A*-A pass rate 40%

The A*-B pass rate 65%

GCSE Pass rate of 96%

40% achieve at least 6 A Grade equivalents



Leavers Destinations 2024

WOODHOUSE GROVE SCHOOL Leavers' Destinations 2024



Other UK Destinations 2024

Bath University Economics, Health and Exercise Science

Bradford University Mechanical Engineering, Law, Clinical Sciences

University City of London Business Management

College of Estate Management Chartered Surveying

De Montford University Biomedical Sciences

University of Huddersfield Pharmacy, Creative Music Production, Music Performance, Health Foundation

Keele Pharmacy

Kent and Medway Medical School Medicine

Lancaster Business Management (2), Finance

Leeds Arts University Games Art

Leeds Beckett Creative Writing, Law, Real Estate & Property Management, Business Management with Marketing

Leicester University Medicine

Liverpool John Moores English, Media & Cultural Studies

Loughborough Commercial Management & Quantity Surveying

Manchester Metropolitan Psychology (2), Banking and Finance, Business Management, Events Management, Fashion Communication

Northumbria Geography and Environmental Science, Business (2), Architecture, History, Economics and Finance

Nottingham Trent Business Management & Marketing, Sociology

Portsmouth University Engineering & Technology

University of Salford Quantity Surveying

York St John Education, SEN and Mental Health

Apprenticeships

Police Constable Apprenticeship

Country Style Foods

JM Bentley

Employment

Aon

Belvoir Estate Agents

Russell Taylor

Bespoke Stairlift

International Destinations 2024

Hong Kong Universities (2 students)

Woosong University, South Korea (International Hotel Management)

St Thomas University, Miami, USA Sports Management

Russell Group Destinations 2024

Newcastle

Accounting and Finance
History & Archaeology
Psychology
English Language and Literature
Film and Media
Mathematics and Economics
Geography and Urban Planning

Durham

History
Geography
Natural Sciences

Leeds

Philosophy and Politics
International Development
Mathematics

York

English
Sociology with Criminology

Sheffield

Aerospace Engineering
Applied Social Sciences
Business and Economics

Nottingham

Veterinary Medicine (2)
Finance, Accounting & Management
Economics & Econometrics

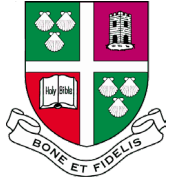
Oxford

Law

Imperial College

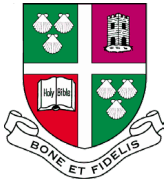
Aeronautical Engineering
Design Engineering





Learning is enriched by co-curricular experiences





Application Process

Step one

Fill in our Application Form and contact the school to pay your Registration Fee. Agents will support you through this process.

Step two

Email a copy of your latest school report to our Admissions Manager, Jo Amos: Amos.JL@woodhousegrove.co.uk , to support your application.

Step three

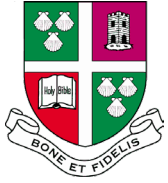
We will arrange for entrance examinations to be taken either in your current school or through your Agent (if you have one). You will also be invited to an online interview with Mr King or a Deputy Head.

Step four

An offer letter will be sent out. We know that choosing the right school is an important decision and we want to make it as straightforward as possible.

Step five

Upon acceptance, we will submit request a CAS form, should a Visa be required.



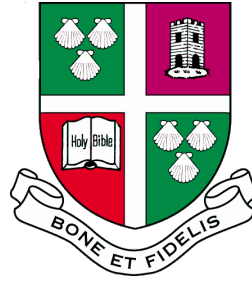
Why Woodhouse Grove?

- Joining our community – a family away from home.

"Big enough to offer wide range of opportunities but small enough to know each individual."

- Modern approach but with traditional values
- Perfect location to explore
- Outstanding academic and pastoral support
- Proven record in University admission and transition support
- Investment in facilities and the individual





WOODHOUSE GROVE SCHOOL

Any Questions?

Scan qr code
to save presentation

